

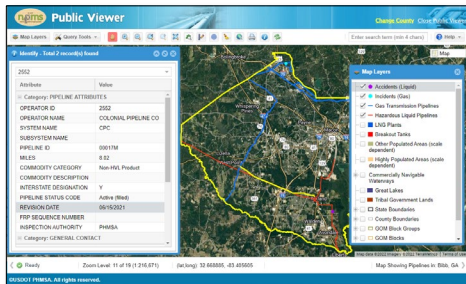


What Is the NPMS?

The NPMS gives you access to pipeline maps. It includes a Geographic Information System (GIS) database of gas transmission and hazardous liquid pipelines and liquefied natural gas plants under the jurisdiction of the Pipeline and Hazardous Materials Safety Administration (PHMSA). Users can access NPMS maps through various web and mobile mapping applications and resources available on the NPMS website.

Is the NPMS up to date?

Federal safety regulations require pipeline operators to update their NPMS data each year. Every day PHMSA works directly with operators to improve data accuracy. Every two months PHMSA publishes updates on the NPMS website and mapping applications. Look at a pipeline's Revision Date to see when it was last updated.



Knowing where pipelines are in your community is fundamental to effective pipeline emergency mitigation and management.

Who Uses the NPMS?

PHMSA uses the NPMS for emergency response and mitigation, risk analysis, inspection planning, regulatory compliance and data analysis. Other federal, state, local and tribal governments, emergency responders and the public also use the NPMS for public safety, homeland security, environmental protection, land use planning, and energy research. Do not use the NPMS in place of calling 811 prior to excavation activities.



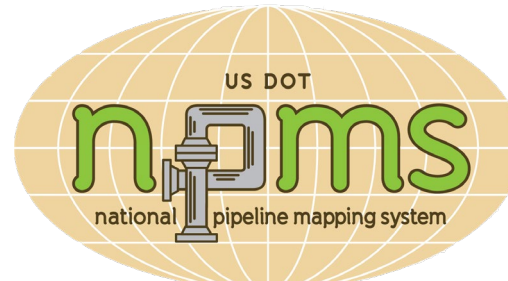
NPMS CONTACT

Leigha Gooding
GIS Manager, US DOT PHMSA

npms@dot.gov

NPMS WEBSITE

www.npms.phmsa.dot.gov



Know what's below.
Call before you dig.

National Pipeline Mapping System



NPMS User Pages

The most common NPMS resources are available from the homepage. Other NPMS information and resources are organized into separate pages for each stakeholder type. All emergency responders should visit the Government Official page. Additional links at the bottom of the NPMS home page link to general NPMS information and staff contact information.

Government Official Page

This page is intended for government officials at the local, state, tribal or federal level, including all emergency responders. Certain mapping application options and GIS data are limited to government officials. Public NPMS resources are also available here.

Pipeline Operator Page

This page is intended for employees of pipeline operating companies that are subject to the NPMS reporting regulations. This includes operators of gas transmission or hazardous liquid pipelines, breakout tanks and liquefied natural gas plants under PHMSA's jurisdiction. This page includes additional applications, standards and supplemental instructions to support the NPMS data submission process, including additional GIS data layers to support integrity management planning. Public NPMS resources are also available here.

General Public Page

This page is intended for all other NPMS users. The general public can access other PHMSA data, download a national pipeline map or pipeline attribute spreadsheets with information grouped by county and offshore area.



PIMMA

The Pipeline Information Mapping Application (PIMMA) is a password protected web mapping application limited to government officials and pipeline operators. Each user can only access pipeline data in their area of jurisdiction, or for the pipelines they operate. PIMMA allows the user to:

- View maps and query NPMS data, including
 - gas transmission pipelines
 - hazardous liquid pipelines
 - related incident, accident, and pipeline network history since 2012.
- View attribute information about each pipeline segment, including operator contact information and links to operator public awareness websites.
- Access operator emergency contact information for each pipeline segment.
- Display street map or aerial imagery backgrounds, and search for common places, street addresses or coordinate locations.
- View other data layers depicting certain areas of high consequence, government and tribal land boundaries and pipeline facilities.
- Mark-up and print custom PDF maps for official use only.
- View demo videos and a help manual.



PIMMA and Public Viewer iPhone Apps are available by searching "pipeline information" in the App Store.

Public Map Viewer

The Public Map Viewer is an open web mapping application where users can access NPMS maps for one county or offshore area at a time. Users cannot zoom into scales larger than 1:24,000 or access certain attributes, such as pipe diameter. Pipeline incident or accident information is not limited to one county or offshore area at a time. The Public Map Viewer allows the user to:

- View maps and query NPMS data, including
 - gas transmission pipelines
 - hazardous liquid pipelines
 - related incident and accident history since 2012.
- View attribute information about each pipeline segment, including operator contact information and links to operator public awareness websites.
- Display street map or aerial imagery backgrounds, and search for common places, street addresses or coordinate locations.
- View other data layers depicting certain areas of high consequence, government and tribal land boundaries and pipeline facilities.
- Mark-up and print custom PDF maps.
- View demo videos and a help manual.

NPMS GIS Data Request

Government officials and pipeline operators can request NPMS GIS data downloads. Like PIMMA, each of these users can request NPMS GIS data in their area of jurisdiction or for the pipelines their company operates. NPMS GIS data is Controlled Unclassified Information (CUI), and recipients must agree to data use restrictions.

Pipeline Operator Directory

Users can search to see who's operating pipelines in their state, county or ZIP code and gather pipeline operator contact information for those pipelines