

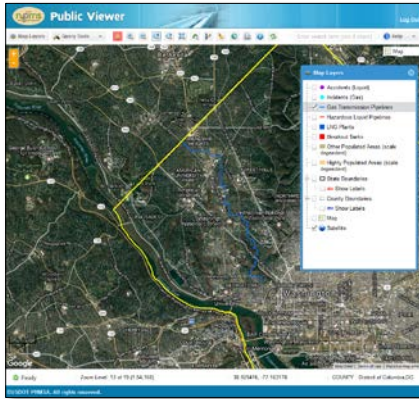


What Is the NPMS?

The NPMS allows the user to view pipeline maps. It is a Geographic Information System (GIS) database containing locations of and information about gas transmission and hazardous liquid pipelines and liquefied natural gas (LNG) plants which are under the jurisdiction of the Pipeline and Hazardous Materials Safety Administration (PHMSA). The NPMS also contains voluntarily submitted breakout tank data. The NPMS does not contain gas gathering or distribution pipelines.

How Is the NPMS Database Updated?

Pipeline operators submit mapping data or review their current mapping data for accuracy annually. PHMSA processes data submissions year-round and the online map viewers are updated every other month.



Knowing where pipelines are in your community is fundamental to effective pipeline emergency mitigation and management.

Who Uses the NPMS?

The NPMS is used by PHMSA for emergency response, pipeline inspections, regulatory compliance and analysis purposes. The NPMS is also used by other government officials, pipeline operators, and the general public for a variety of tasks including emergency response, smart growth planning, critical infrastructure protection, and environmental protection. The NPMS cannot be used in place of calling 811 prior to any excavation activities.



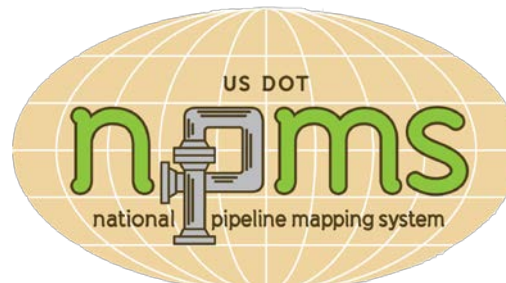
**Know what's below.
Call before you dig.**

NPMS CONTACT

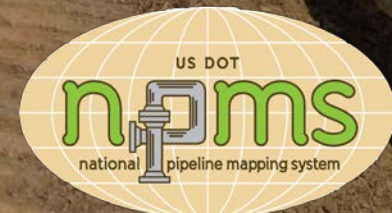
Amy Nelson
GIS Manager, US DOT PHMSA
npms@dot.gov

NPMS WEB SITE

www.npms.phmsa.dot.gov



**Know what's below.
Call before you dig.**



NPMS User Portals

The NPMS web site is divided into user type portals. Click on the correct user type portal to view available information and resources. If you are new to the NPMS web site, click on the First-Time Visitor portal to learn more about the NPMS user types. Additional links at the bottom of the NPMS home page link to About, FAQ and Contact Us pages.

Government Official Portal

This portal is intended for government officials at the local, state or federal level, including emergency responders and tribal governments. Government officials can also access other related GIS data layers from this location.

Pipeline Operator Portal

This portal is intended for employees of pipeline operators who contribute data to the NPMS. This includes operators of gas transmission or hazardous liquid pipelines, breakout tanks and liquefied natural gas facilities under PHMSA jurisdiction. In addition to NPMS mapping data and resources, operators can access information regarding NPMS data submission requirements, procedures and additional GIS data layers to support integrity management planning.

General Public Portal

This portal is available for any member of the public. In addition to NPMS mapping data and resources, you can learn about regional PHMSA contacts, the Freedom of Information Act (FOIA), and other PHMSA and pipeline safety resources.



PIMMA Access

The Pipeline Information Management Mapping Application (PIMMA) is a password protected web mapping application limited to government officials or pipeline operators. Each user will only have access to the pipelines in their area of jurisdiction or the pipelines they operate. Shortcuts to apply for PIMMA access or login to PIMMA are on the NPMS home page. Access and additional information are also available within the government and pipeline operator user portals. PIMMA allows the user to:

- View and query the following data layers by location and characteristics
 - Gas transmission pipelines
 - Hazardous liquid pipelines
 - Gas transmission incidents and hazardous liquid pipeline accidents dating back to 2002
 - Pipeline history in the NPMS dating back to 2012
- Mark-up and print PDF maps for official use only
- Display street map or aerial imagery backgrounds
- View other data layers depicting certain areas of high consequence or relevant facilities
- Obtain general operator contact and 24-hour emergency contact information



PIMMA and Public Viewer iPhone Apps are available by searching "pipeline information" in your iOS device App Store.

Public Map Viewer

The Public Map Viewer is similar to PIMMA and is available to all. Shortcuts to view a demo video and read more about the Public Map Viewer or to use the Public Map Viewer are on the NPMS home page.

- View and query NPMS data for a selected county and accident and incident data for the entire US
- Mark-up and print PDF maps for public distribution
- Display street map or aerial imagery backgrounds
- Gather general operator contact information

GIS Data Request

Government officials and pipeline operators can request access to raw GIS data from the NPMS for use in their own GIS systems. This option is ideal if you are a GIS user and wish to produce your own maps or analysis. Like PIMMA, each user may apply for access to the NPMS data in their area of jurisdiction or the pipelines they operate. GIS data from the NPMS is for official use only and requires an application process that can include official request letters from your manager depending on your access level. Government officials and pipeline operators can read more about GIS data access in their respective portals on the NPMS home page.

Find Who's Operating Pipelines in Your Area

Anyone can gather general operator contact information for each company with pipeline operations in a user specified state, county or ZIP code. All user portals offer access to this pipeline operator directory.

Download Nationwide PDF Map

All user portals offer access to the national map.

Download Pipeline Mileage by County

All user portals offer access to the active pipeline mileage by county spreadsheet.